

ECO YZA BELT



It is designed to provide the patient with a simple and effective chair support.

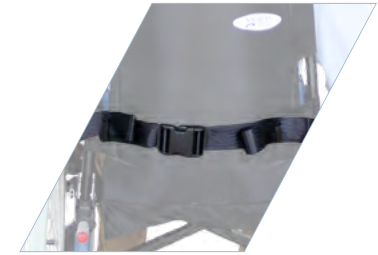
Its modularity with the addition of a modular pelvic element participates in the search for a personalized and optimized posture for patients confined to a chair.



We recommend using it when the patient need to have the back pressed against the chair back and the buttocks at the bottom of the seat.

REFERENCES	
Eco Yza Belt	CECO2-PF-A
Pelvic Element	CECO-MP-PF

Maximum useful area: 228 cm



Pelvic modular element is recommended if the patient's pelvis slides forward

ECO SUPPORT BELT



It is designed to prevent patients from falling.

By keeping the pelvis upright, it ensures to the patient an ideal position with a good alignment of the trunk, head and lower limbs.



We recommend using it when the patient need to have the back pressed against the chair back and the buttocks at the bottom of the seat.

REFERENCE	
One size fit all	CCMED2HP-PF

Maximum useful area: 164 cm



PATIENT POSITIONING