



150 kg

37 kg

870/1310 mm

113 mm

540/750 mm



SCAN ME
to learn more

WAYUP PLUS

electrical opening legs

The addition of a second actuator to electrically spread the legs of the device (up to 75 cm) offers more comfort and efficiency to the caregiver to perform the patient's transfer in the safest way possible.

WATCH

the WAYUP range product video
on our YOUTUBE channel



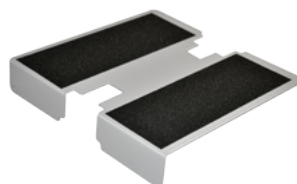
YouTube
SCAN
to watch



Premium control box
for an enhanced use



Foam shin block for a
comfortable support



Removable 3-function
footrest for tailored uses



Electrical opening legs
for ease of use

OPTIONS



Lithium Battery



Calf Strap

REFERENCES

with standard battery: WAYUP4ECP-E-PF
with lithium battery: WAYUP4ECP-E-LI-PF