



SCAN ME
to learn more

EASYLEV PLUS

electrical opening legs

The addition of a second actuator to electrically spread the legs of the device (up to 94 cm) offers more efficiency to the caregiver to effectively perform a change with the complete release of the patient's lower body.

WATCH

the EASYLEV range product video
on our YOUTUBE channel



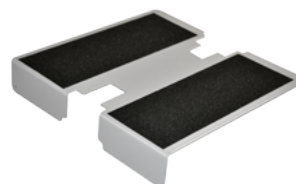
YouTube
SCAN
to watch



Traction belt for a patented combined movement increasing patient comfort



Premium control box for an enhanced use



Removable 3-function footrest for tailored uses



Electrical opening legs for ease of use

OPTIONS



Lithium Battery



Calf Strap

REFERENCES

with standard battery: EASYLEVECP-E-PF
with lithium battery: EASYLEVECP-E-LI-PF