

WAYUP XL

With Electrical Opening Legs

Made in France
CE
 WARRANTY 5 YEARS

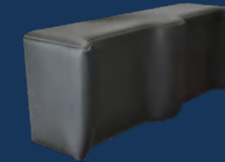
920/1310 mm
 110 mm
 700/940 mm
 300 kg
 45 kg



KEY FEATURES



Electrical opening legs for ease of use



Specially designed foam shin block



Removable platform to use the device as a walking aid

PRESENTATION

The WAYUP is also available in XL version as a specialized model for bariatric patients up to 300 kg. Secure and extremely sturdy, it is designed to improve the daily lives of patients whose size and weight are challenging with its lifting power (10 000 N actuator).

OPTION



Lithium Battery for more efficiency:
 - up to 312 cycles
 - 2 years warranty

RECOMMENDED SLING

The Specific Sling (page 38)

Positioned on the lumbar region in order to trigger the patient's natural raising scheme, its rigid foam padding at the back-part level reduces painful pressure and its belt allows transfers in a sitting position.



REFERENCES

With standard battery	WAYUPXL-E-PF
With lithium battery	WAYUPXL-E-LI-PF