



*This medical device is intended for patient positioning.
This is not a restraint system.*

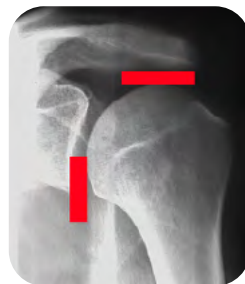
Before use, it is important to check the status of the device: stitching, state of the buckles, slings, fabric. Any damage will either be repaired by NAUSICAA Medical, or will result in a disposal.

HOLST ARM SLING

NOT APPROPRIATE FOR A BROKEN ARM OR A BROKEN FOREARM



Without



With



**THIS MEDICAL DEVICE MUST BE
IMPLEMENTED BY A TRAINED
HEALTH PROFESSIONAL**



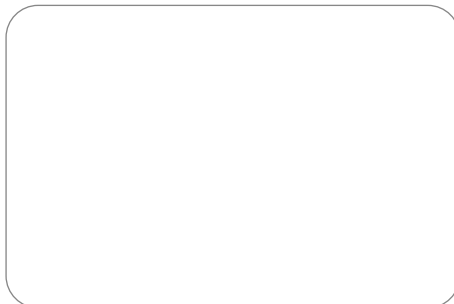
USE:

THE HOLST ARM SLING GOAL IS TO PREVENT OR TO COMPLETELY REDUCE THE GLENO-HUMERAL SUB-LUXATION (WHICH IS SOURCE OF SHOULDER PAINS AND ALGODYSTROPHY) WHILE ALLOWING A DAILY SETTING UP BY THE PATIENTS THEMSELVES, WITHOUT CHANGING THE INITIAL ADJUSTMENT.

Mechanical Principle:

- The elastic strap exerts a vertical traction on the humerus by applying the traction force on the elbow and the ipsilateral shoulder.

Contraindication: Not suitable for a fractured arm or forearm.



EC-HST-PF

v 05.12/2020

Important Recommendations :

In order to get a maximum efficiency of these sort of product, it is necessary :

- to choose the appropriate size for the patient
- to get the best possible adjustment to the patient

These products must not be in direct contact with a wounded skin.



HOLST ARM SLING

Combination of polyurethan foam and jersey/cotton polyester
Jersey 100% polyester fabric
100% cotton bias
100% polyester strap
Nylon buckle
Thermo compressed foam

INSTRUCTIONS FOR USE

TO BE USED ONLY FOR THE INDICATED USE:

This settlement by the patient allows to keep setting which should be made by a qualified caregiver.



Description : An enveloping shoulder pad (1), weared internal face by an «anti-derapant jacket, and placed on shoulder on the «hémiplegique» side (photo a,b,c,d). An elastic sling (2) of 50 mm large, adjustable in length, link the anterior and posterior shoulder pad sides under the «coude» fold at 90°, «hémiplegique side (photo g). The comfort of the elbow is ensure by a «coudière» (3) «en mouse thermocompressée, amovible» and washable separately. A second elastic sling (4), adjustable/ fixable also in length, link the anterior and posterior shoulder pad faces by passing around the thorax, under the valid arm. A hand support adjustable in high (5) is fixed on the anterior shoulder pad face. A «dispositif d'attache» with one hand enable the patient to make the settlement himself. It is planed a scarf for «hémiplegique left» (blue color biais) and for «hémiplegique» right (green color biais). The diversity and the easy setting allows to propose one single size, witch is adapted to any morphology.



v 05.12/2020



THIS MEDICAL DEVICE MUST BE SET UP BY A PROFESSIONAL OR THE USER MUST BE EDUCATED TO SET IT UP.