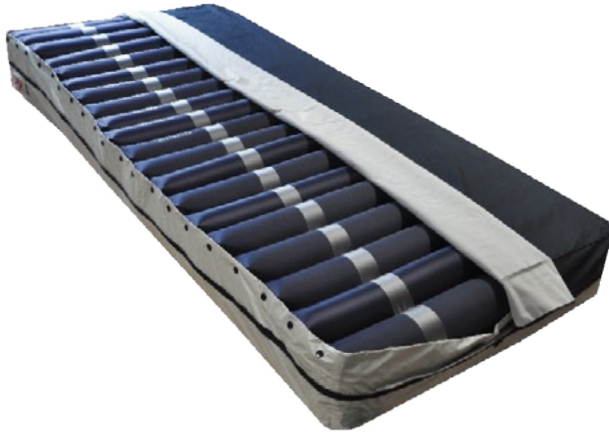


PRODUCT SHEET NAUSIFLOW 100–834 AIR MATTRESS



Specifications:

Dimensions: 20 x 85 x 200 cm

20 cm air height

Top separable cover for easy maintenance -
CRIB 5 classified: antibacterial and antifungal
Class 1 medical device

Key features:

Top separable cover

Separable zipper

Independent cells in polyurethane on nylon frame

Quick fasteners for the disconnectable and removable cells

Upper air level (static or alternating)

Lower air level (static)

In option, caps for cells discharge

Transport mode

CPR (cardiopulmonary resuscitation): deflates quickly (less than 20 seconds with a patient) the portion of the mattress which supports the patient's bust